



Specification for a Bandpass LC Filter
MtronPTI P/N: LF10059R

I. GENERAL & ELECTRICAL REQUIREMENTS @ 25°C:

Passband: 1350MHz to 2110MHz

Passband Insertion Loss (within the Passband): 1.0dB Maximum

Passband Return Loss: ≥ 14.0 dB

Passband Ripple (over any 12MHz band within the Passband) : < 0.2 dB

Group Delay (over any 12MHz band within the Passband) : $< 2\eta$ sec

Rejection

@0 to 900MHz: 30dB minimum

@2700 to 6330MHz: 60dB minimum

@6330 to 10550MHz: 50dB minimum

Impedance: 50 ohms Nominal

Power Rating:

Input Power, CW: 50W Max

Input Power, Peak (By design, not tested): 275W Max. (50% Duty Cycle, 500uSec pulse width)

No damage Input Power, Peak (Goal by design, not tested): 500W Max. (30% Duty Cycle, 500uSec pulse width)

Lightning (By design, not tested): Waveform 4, Level 4 requirement of RTCA/DO-160E, Figure 22-5, pin injection test A (750V/150A), 6.4 microseconds rise time, 69 microseconds to 50% decay when applied to the antenna interface between the Connector pin and case ground

II. ENVIRONMENTAL & PHYSICAL REQUIREMENTS:

Temperature Range:

Operating: -40°C to +85°C (@ mounting surface)

Storage: -40°C to +85°C

Altitude: 40,000ft Max.

Vibe/acceralation: 13.5 g in both directions of three orthogonal axes

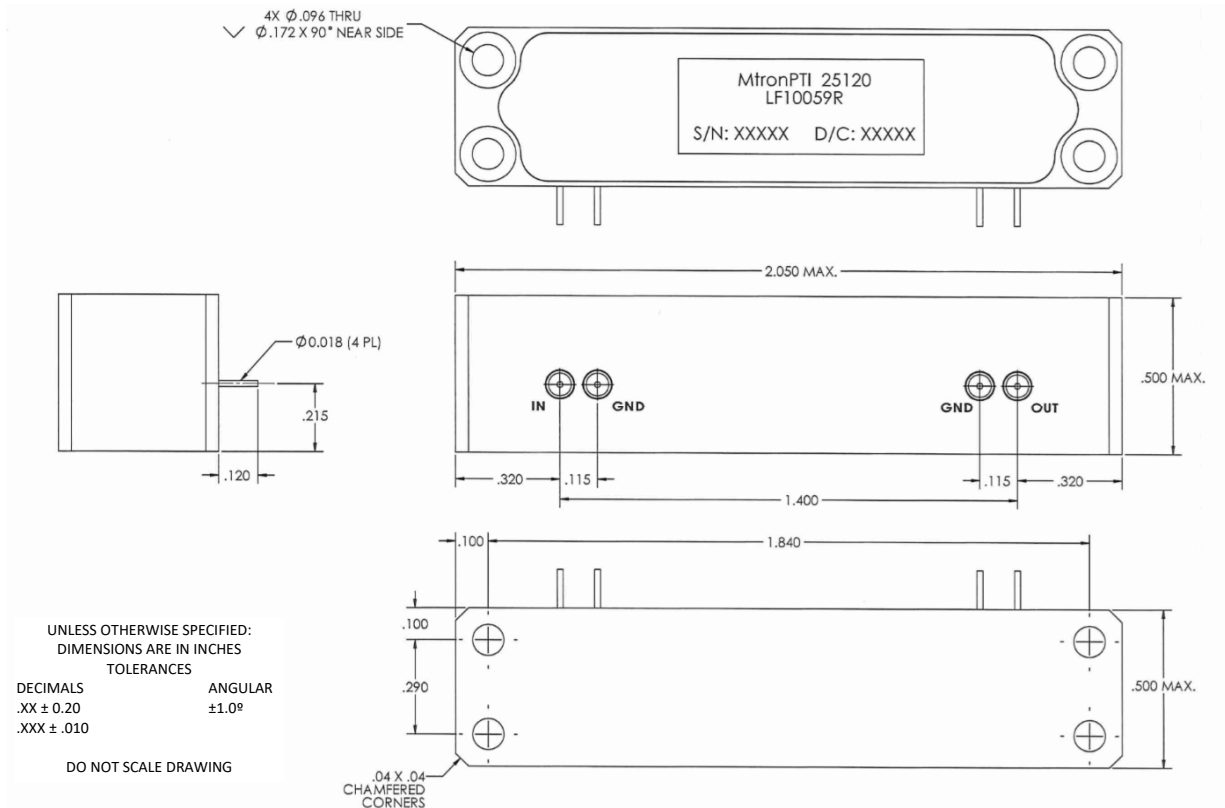
RoHS Compliant: Yes

Package: 2.050" x 0.500" x 0.500" max.



Specification for a Bandpass LC Filter
 MtronPTI P/N: LF10059R

III. Outline Drawing

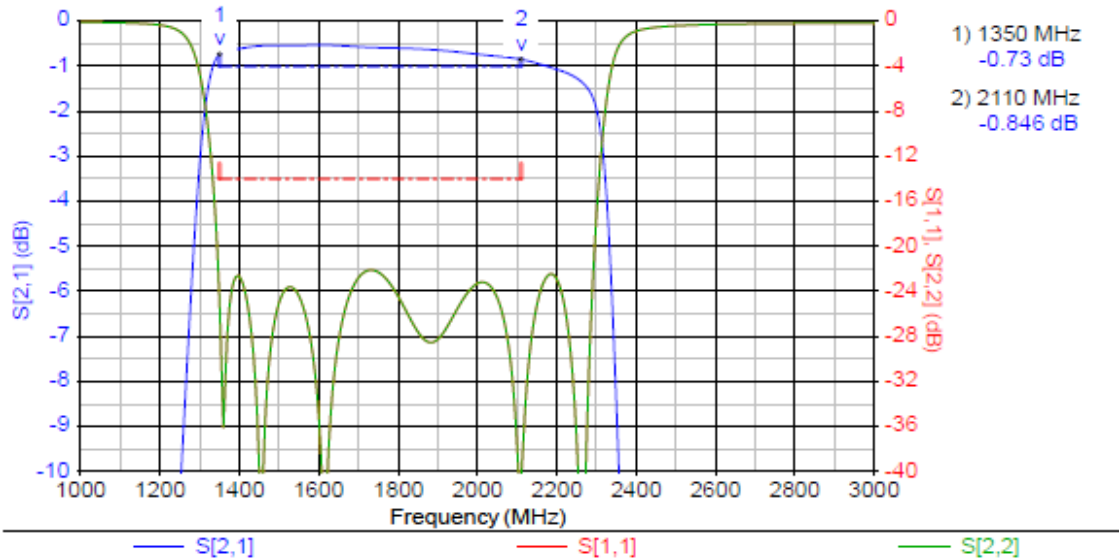




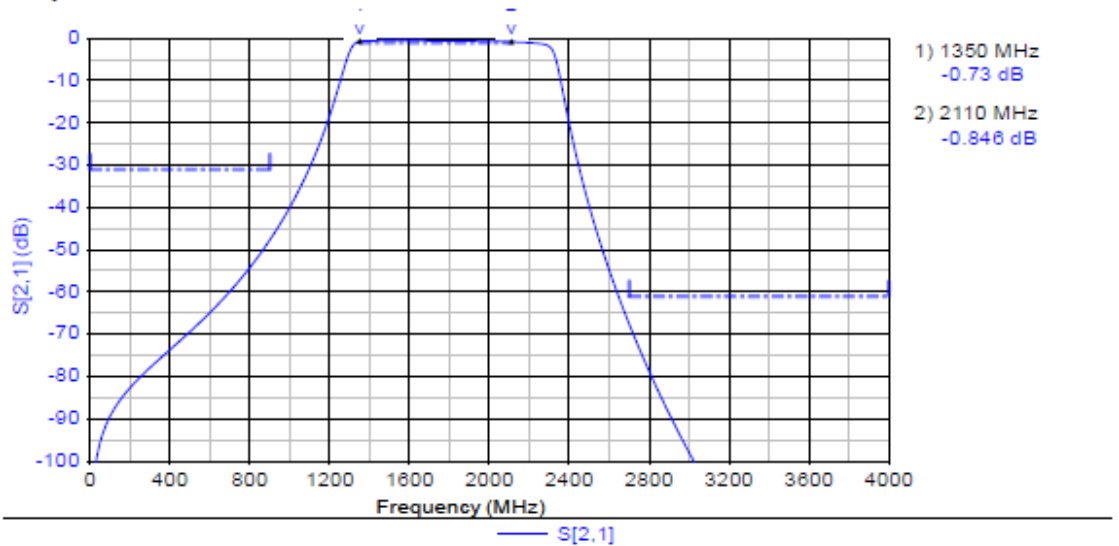
Specification for a Bandpass LC Filter
 MtronPTI P/N: LF10059R

Simulation

Passband



Stopband



IV. Datasheet Revision Table:

Date	Rev.	Orig.	Details of Revision
02-28-20	B	BRR	Outline Drawing Added, RoHS Compliance noted
01-23-20	A	BRR	Original Release