

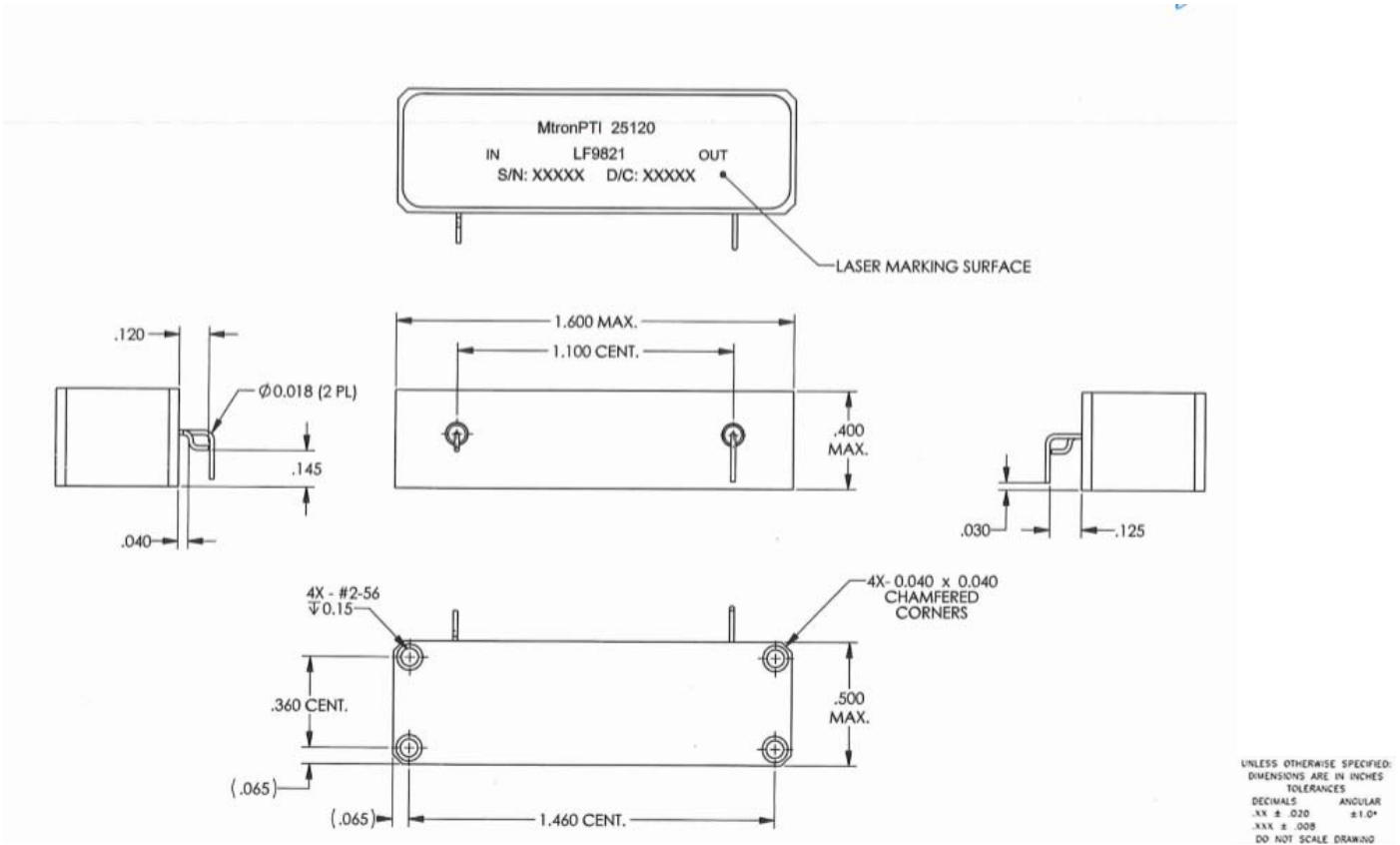
Specification for a Bandpass LC Filter
 MtronPTI P/N: LF9821

I. GENERAL & ELECTRICAL REQUIREMENTS:

- Passband: 1300MHz to 1850MHz
- Passband Insertion Loss (within the Passband): 1.0dB maximum
- Passband Return Loss: ≥ 15.0 dB
- Load VSWR: Infinity, 3sec maximum
- Rejection
 - @50 to 950MHz: 15dB minimum
 - @2600 to 5550MHz: 65dB minimum
 - @5550 to 10000MHz: 40dB minimum
- Impedance: 50 ohms Nominal
- Power Rating:
 - CW Input Power: 175W maximum
 - Peak Input Power, 50% duty cycle, 1 ms pulse width (By design): 350W maximum

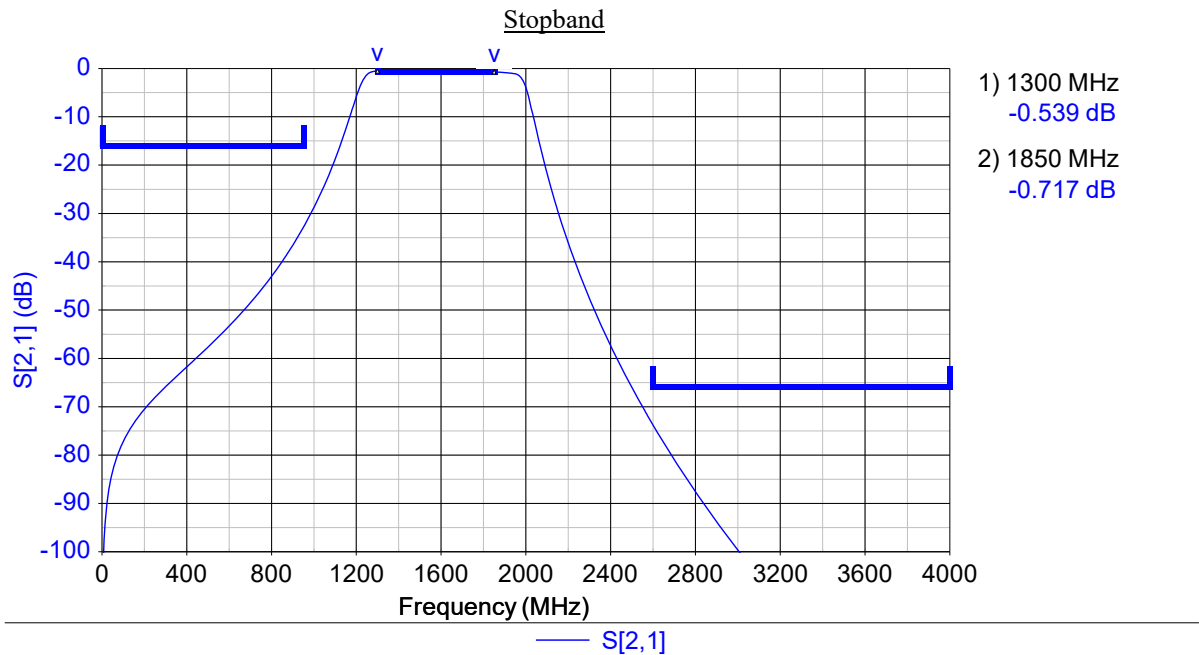
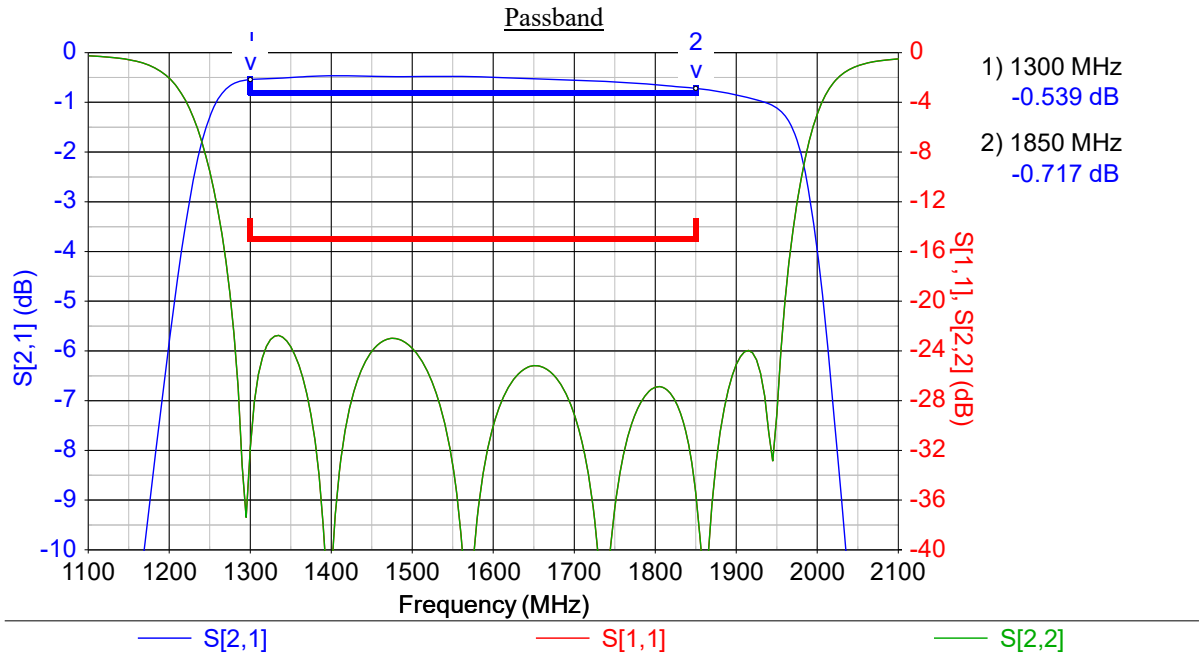
II. ENVIRONMENTAL & PHYSICAL REQUIREMENTS:

1. TEMPERATURE RANGE
 - Operating: -40°C to $+72^{\circ}\text{C}$
2. Altitude: 70,000ft Max. above sea level
3. Heat Sink Requirement : 0.6 $^{\circ}\text{C}/\text{W}$ max (For Operation up to $+72^{\circ}\text{C}$)
4. PACKAGE: 1.60"x0.50"x0.40" LWH max.



Specification for a Bandpass LC Filter
 MtronPTI P/N: LF9821

III. Simulation



IV. Datasheet Revision Table:

Date	Rev.	Orig.	Details of Revision
03-13-19	B	BRR	Outline Drawing updated
03-12-18	A	DPD	Original Draft