

## Specification for an SMD LC Filter MtronPTI P/N: LF9248

### I. GENERAL & ELECTRICAL REQUIREMENTS:

1. CENTER FREQUENCY (F<sub>0</sub>): 2200MHz nominal
2. BANDWIDTH @ 1dB: 400MHz to 475.2MHz
3. INSERTION LOSS (@ peak of transmission): ≤ 2.0dBa
4. REJECTION
  - @ 1700MHz: 60dBc minimum
  - @ 2750MHz: 60dBc minimum
5. Z<sub>IN</sub>/Z<sub>OUT</sub>: 50Ω nominal

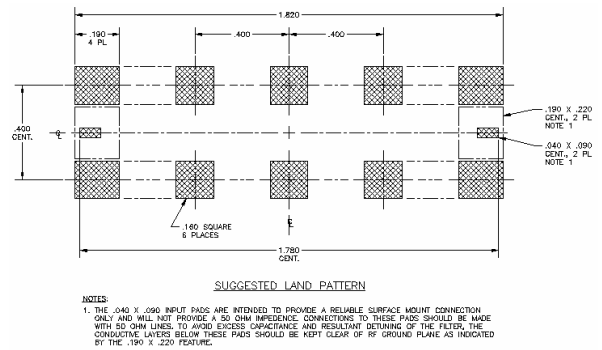
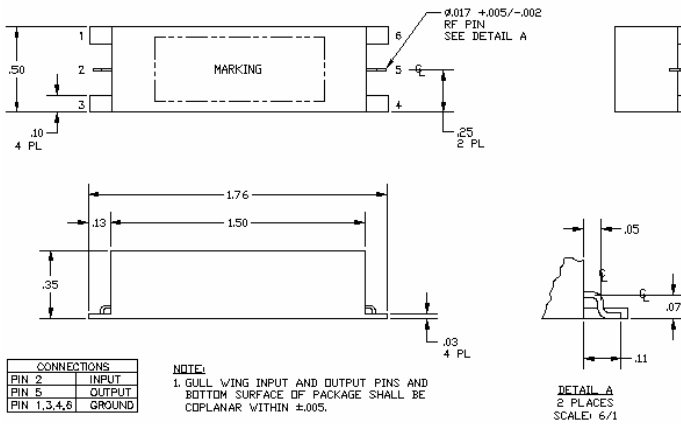
### II. ENVIRONMENTAL & PHYSICAL REQUIREMENTS:

1. TEMPERATURE RANGE
  - Operating: 0°C to +50°C
  - Storage: -40°C to +85°C
2. PACKAGE <sup>Note 1</sup>: SMD (see Figure 1 & 2)
3. SOLDERABILITY: Per EIAJ-STD-002 (see Figure 3)

*Note 1: Sn10 solder will be utilized throughout the construction and sealing of the LF9248. Therefore, it will support automated assembly processing. Including; Pick & Place, reflow soldering and post-reflow aqueous and non-aqueous wash.*

*Note 2: The LF9248 can be supplied on tape & reel but the MOQ for tape & reel is 100-units.*

### III. DIMENSIONS:

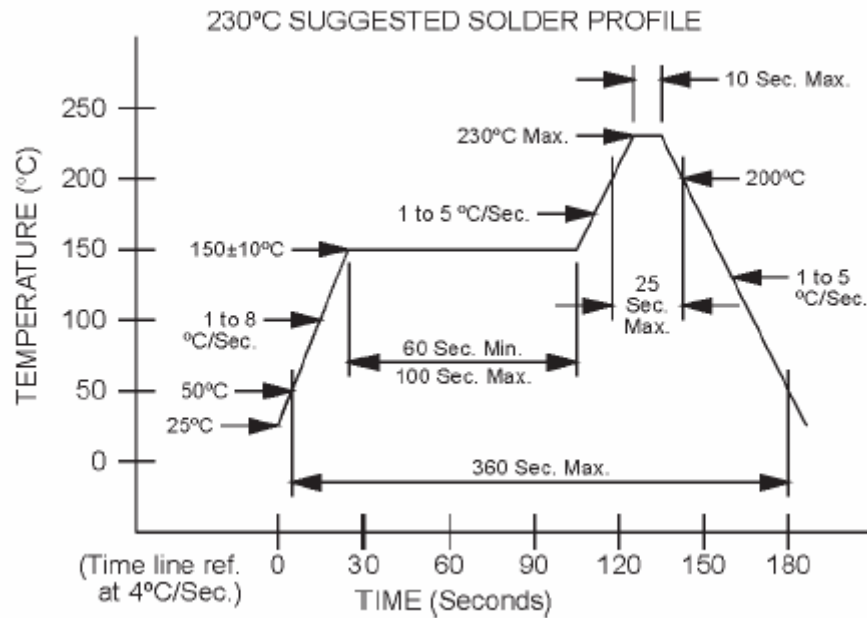


**Figure 2: Recommended PAD Layout**

**Figure 1: Package Outline Drawing**

Specification for an SMD LC Filter  
 MtronPTI P/N: LF9248

IV. RECOMMENDED SOLDER REFLOW PROFILE:



**Figure 3: Recommended Reflow Profile**