

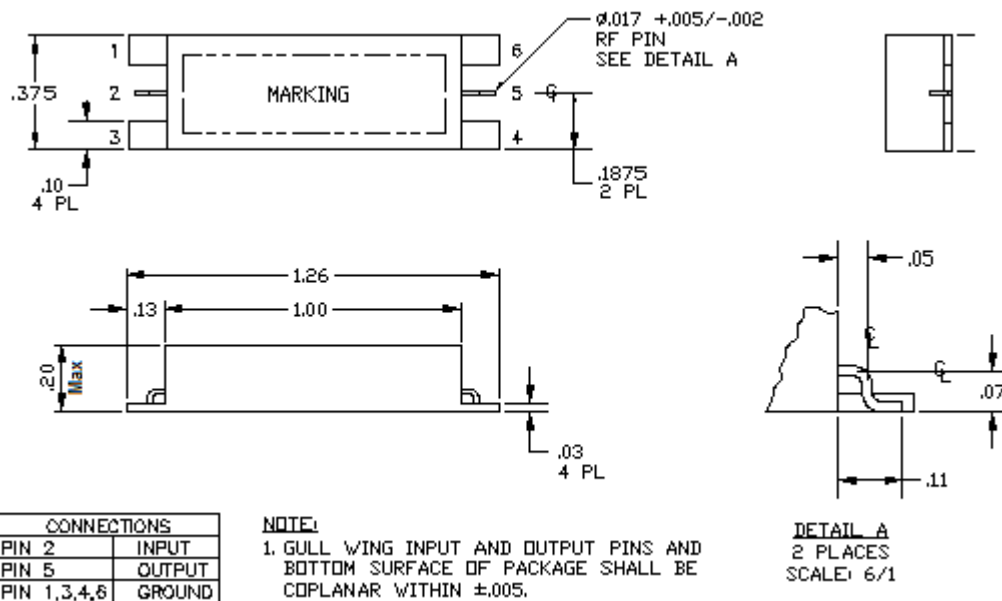
Specification for an SMD Low Profile LC Filter MtronPTI P/N: LF9392-002

I. General & Electrical Requirements:

Center Frequency (F_{ON}): 1920MHz
 1.0dB Passband: 1420MHz to 2420MHz, minimum
 Insertion Loss (@ the peak of transmission within the 1.0dB Passband): ≤ 2.5 dB
 Passband VSWR: 1.5:1 maximum
 Rejection (ref. to IL)
 DC to 700MHz: 60dB minimum\
 3200MHz to 5000MHz: 60 dB minimum
 Power Handling: ≤ 1 -watt CW
 Z_{IN}/Z_{OUT} : 50 Ω nominal

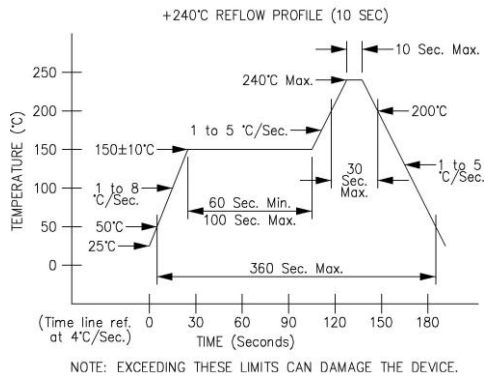
II. Environmental & Physical Requirements:

1. Temperature Range:
 - Operating: -40°C to +85°C
 - Storage: -45°C to +90°C
2. Humidity: $\leq 95\%$ non-condensing
3. Solderability: Per EIAJ-STD-002
4. Package: SMD
 - Material:
 - Body: Milled Aluminum with silver plate
 - Cover: Chromated Aluminum
 - Seal: Laser Sealed
 - Dimensions: See Drawing
 - Supports Automated assembly processing. Including ; pick & place, reflow soldering and post reflow wash.
 - Can be provided on tape & reel for quantities of 100-units or greater.



Specification for an SMD Low Profile LC Filter
MtronPTI P/N: LF9392-002

III. Recommended Solder Reflow Profile:



IV. Data Sheet Revision Table:

Date	Rev.	Author	Details of Revision
12/18/12	0	BRM	Original Release