

SPECIFICATION FOR SMT CRYSTAL MtronPTI P/N M1007S110

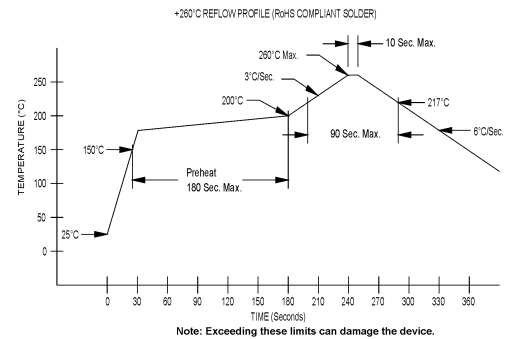
I. GENERAL & ELECTRICAL REQUIREMENTS:

1. MODE OF OSCILLATION: Fundamental (AT-Cut)
2. FREQUENCY OF OPERATION: 8.000000 MHz
3. FREQUENCY TOLERANCE @ +25°C: ± 100 ppm max.
4. FREQUENCY STABILITY OVER TEMPERATURE: ± 100 ppm max.
5. OPERATING TEMPERATURE RANGE: 0°C to +85°C
6. EFFECTIVE SERIES RESISTANCE (ESR): 120 ohms max.
7. LOAD CAPACITANCE: 16 pF
8. SHUNT CAPACITANCE: 10pF max.
9. MOTIONAL CAPACITANCE (Cm): 4.5 fF typical
10. MOTIONAL INDUCTANCE (CL) 88 mH typical
11. AGING: ± 5 ppm/yr. max.
12. DRIVE LEVEL: 500 μW max. 100 μW typical, 10 μW min.

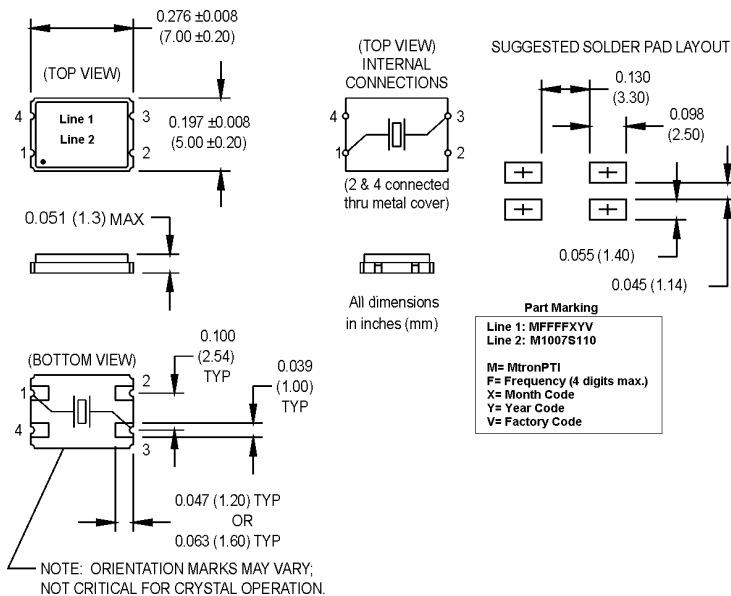
II. ENVIRONMENTAL & MECHANICAL REQUIREMENTS:

1. SHOCK: Per MIL-STD-202, Method 213, Condition C
2. VIBRATION: Per MIL-STD-202, Method 201 & 203
3. HERMETICITY: 1 X 10⁻⁸ atm cc/sec min.
4. SOLDERABILITY: Per EIAJ-STD-002
5. MAXIMUM SOLDERING CONDITIONS: See Figure 1.
6. PACKAGE: 4- pad 5 X 7 X 1.3 mm leadless. RoHS compliant.

Figure 1



III. DIMENSIONS:



IV. DATA SHEET REVISION TABLE:

Date	Rev.	PCN	Details of Revision
6/27/08	0	N/A	Original release.
8/11/08	A	N/A	Updated Motional Parameter to realistic values.