



Planar Filter Product Line

MtronPTI today introduced our new Planar Filter Product Line. For over 57 years MtronPTI has been designing and manufacturing various topology filters for our Industrial, Commercial, Space, Aerospace and Defense customers. As demand increased for frequencies above 2 GHz, we developed the ability to design and manufacture planar filters utilizing interdigital, combine, hairpin, edge coupled and end coupled topologies.

Our planar filters utilize commercial and custom substrates, span from 1.5 to 20GHz, have a typical insertion loss of <1dB, have a very small surface mount footprint and are typically less than 0.080 inch high. Passbands, bandwidths, insertion loss, temperature range, size and power handling can be customized for each application.

MtronPTI's planar filters support the demands of rugged, high-performance applications such as Electronic Warfare, Data Links and SATCOM.

MtronPTI offers a broad line of precision crystal resonators, oscillators, filters, and Integrated Microwave Assembly solutions. MtronPTI is an ISO 9001:2015 and AS9100 Rev. D certified organization.

Features:

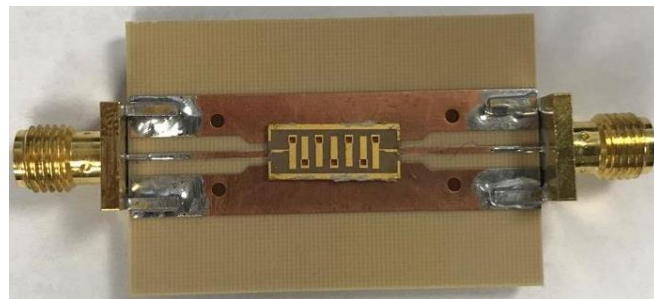
- Extremely Small Size and Low Height
- Low Insertion Loss, <1dB Typ.
- Available from 2 to 50% Bandwidths
- Stable Over a Wide Temperature Range

Applications:

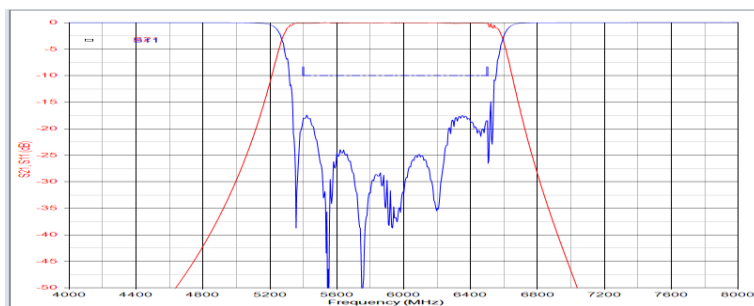
- SATCOM
- Electronic Warfare
- Data Links



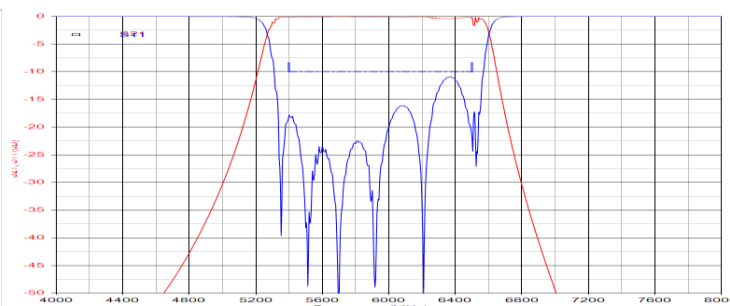
Operational Bandwidths	1.5 to 20GHz
Insertion Loss	<1dB typically
Passband Ripple	Custom design
Mounting Provisions	Standard Surface Mount Technology
Coplanarity of bottom surface	0.005 inches max.
Operating temperature	Custom operating temperatures available.



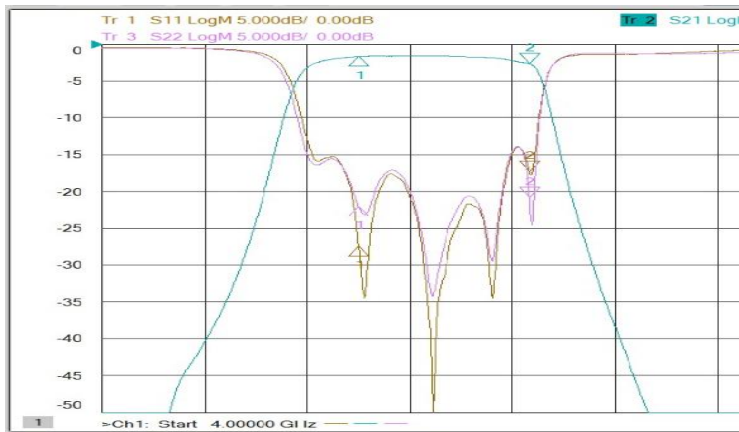
Modeled:



Modeled:



Measured:



Measured:

