

Specification for a 2.350GHz S-Band Bandpass Cavity Filter MtronPTI P/N UF9409

I. General & Electrical Requirements:

1. Center Frequency (F_{ON}): 2.350GHz
2. Passband: 2.200GHz to 2.500GHz
3. Passband Insertion Loss (excludes cable losses): $\leq 1.0\text{dB}$ (0.8dB typical at band edges with proposed package)
4. Passband VSWR: 1.5: 1 maximum
5. Rejection:
 - DC to 2.140GHz: 20dB minimum, 40dB nominal
 - 2.560GHz to 10.000GHz: 20dB minimum, 40dB nominal (no spurs before 10GHz)
6. Input Power Level: 1-watt minimum
7. Z_{IN}/Z_{OUT} : 50 Ω nominal

II. Environmental & Physical Requirements:

1. Temperature:
 - Operating: -45°C to +85°C
 - Storage: -55°C to +125°C
2. Package: Per Figure 1:

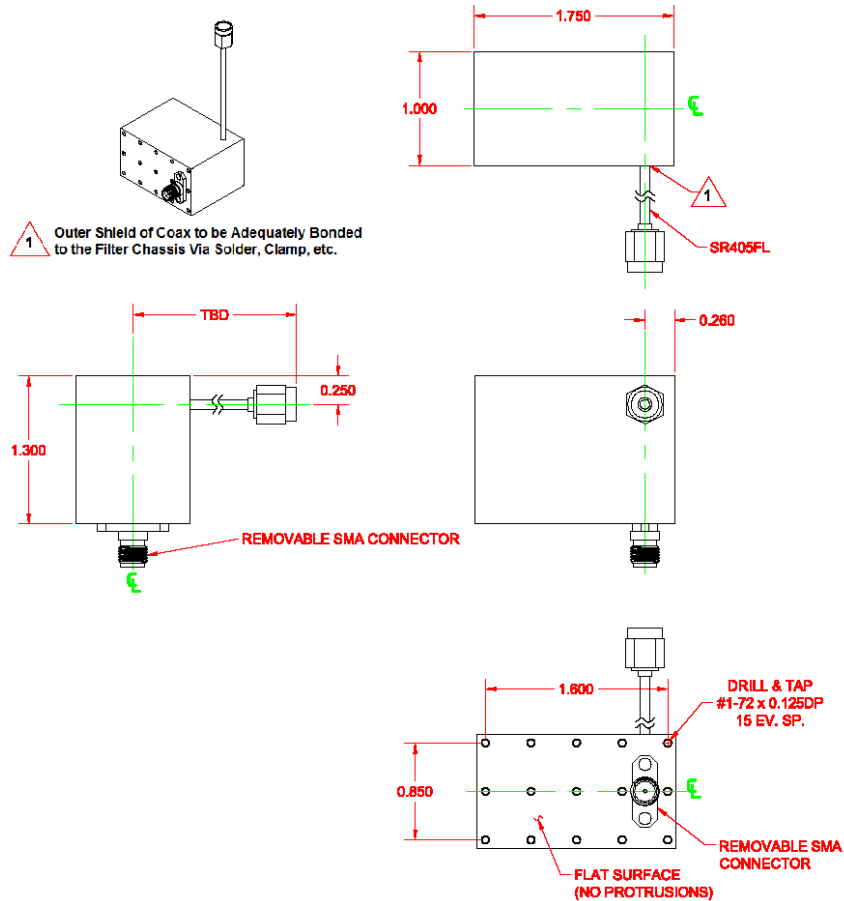


Figure 1: Package Dimensions